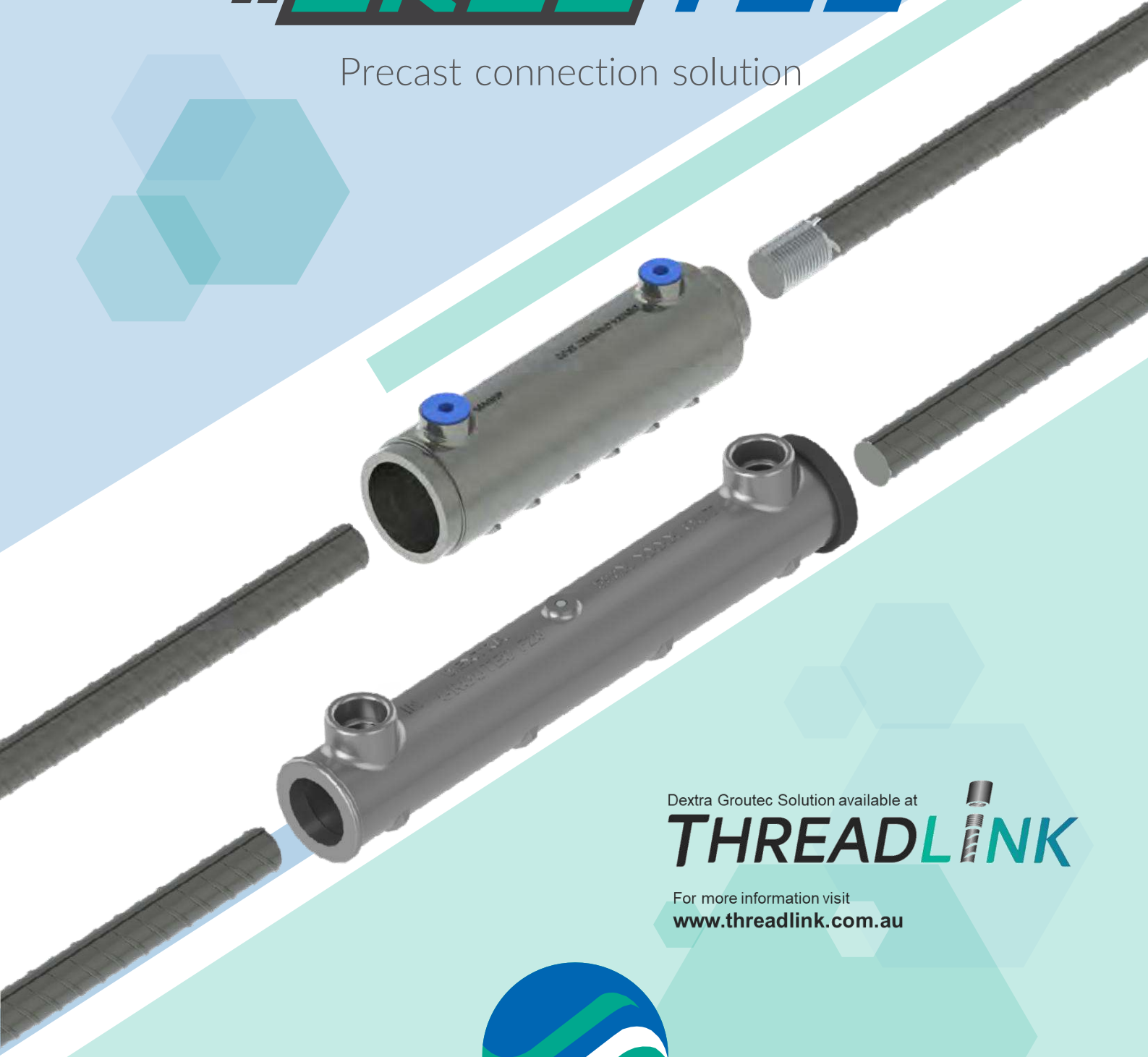


GROUTTEC

Precast connection solution



Dextra Groutec Solution available at

THREADLINK

For more information visit
www.threadlink.com.au



Dextra

www.dextragroup.com

Product features

Groutec is a mechanical splicing system specially designed for the connection of precast concrete elements. It is designed and manufactured in compliance with Eurocode 2, ISO 15835, ACI 318 type 2, IS16172 and AASHTO code requirements*.

Note: (*) To confirm compliance with some applicable standards, Groutec L and F is suitable for reinforcing bars exceeding 36mm in diameter, and Groutec S for bars exceeding 32mm in diameter using specified grout.

Benefits

- Easily connect two precast elements with no requirement for in-situ wet concrete joint.
- Compact and economical splicing solution with one threaded end compatible with Bartec, Fortec, Rolltec or Griptec type threads (for S and L models) or fully grouted with no thread required (for F model).
- Groutec has been tested with grouts from major manufacturers such as Sika, Parex, Davco, Fosroc, BASF and Mapei which have a worldwide distribution network. Note that cement-based products are commonly locally produced from regional raw materials, and their properties can vary based on both origin and climate conditions.
- The same sleeve model can also be used for the connection of different diameters (transition splices).

Three alternative models

Groutec

for « Large tolerance », aims at easing your site operation by allowing a larger axial misalignment tolerance.



Groutec L
Large tolerance

Allows connection of continuation bars that are not perfectly aligned: Misalignments of up to 12mm for small bars (Ø12-Ø20), up to 20 mm for medium bars (Ø25) and up to 25 mm for large bars (Ø28-Ø40) can be accommodated.

Groutec

for « Slim body », allows precasters to create slim columns and wall panels. Grout consumption and preparation time will also be significantly reduced.



Groutec S
Slim outside diameter

Groutec F

For « Fully grouted », allows the connection of two rebars without the need of any threading procedure.



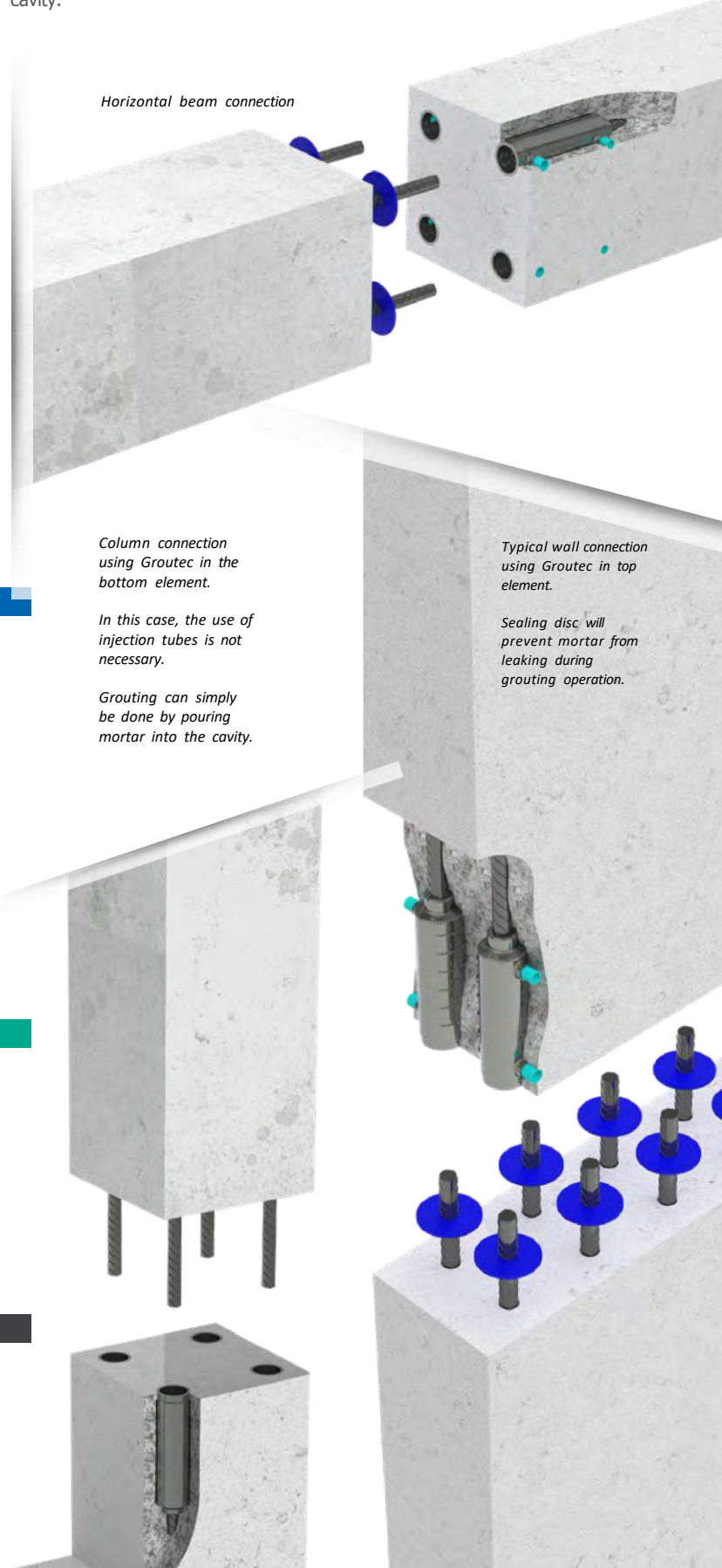
Groutec F
Fully grouted

Applications

Groutec is designed to connect the precast elements either horizontally or vertically.

In horizontal applications and in vertical applications with the Groutec sleeve installed in the top element, the connection is achieved by injecting the grout through the inlet pipe.

In vertical applications with the Groutec sleeve installed in the bottom element, the grout can simply be poured by gravity directly into the sleeve cavity.



Horizontal beam connection

Column connection using Groutec in the bottom element.

In this case, the use of injection tubes is not necessary.

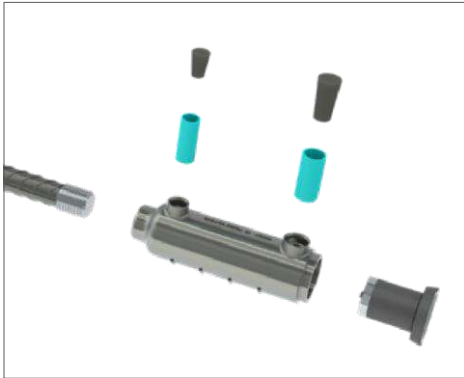
Grouting can simply be done by pouring mortar into the cavity.

Typical wall connection using Groutec in top element.

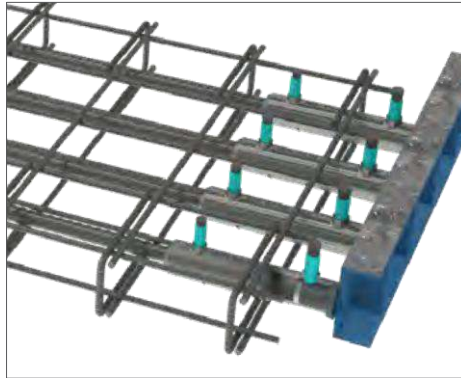
Sealing disc will prevent mortar from leaking during grouting operation.

Installation sequence

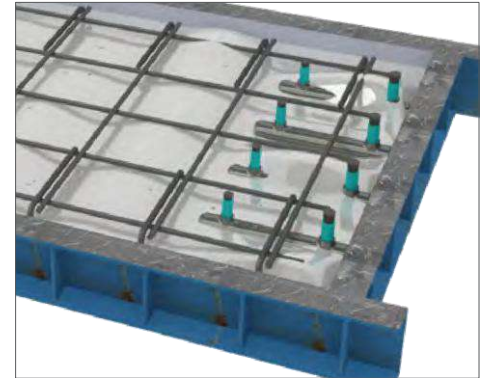
- 1** (with a positioner if needed). Screw in the threaded Pre-position Grouotec onto the formwork (using rebar (for S and L models only).



- 2** Install reinforcement in the formwork.



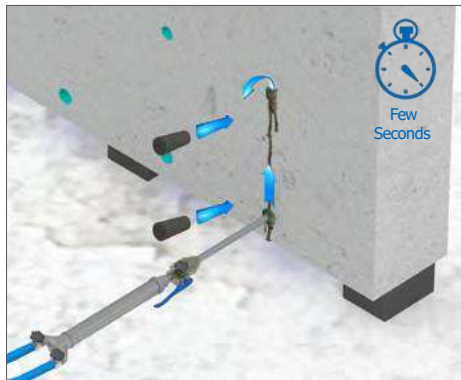
- 3** Proceed with casting. Once ready, open the formwork. Remove plugs and positioners.



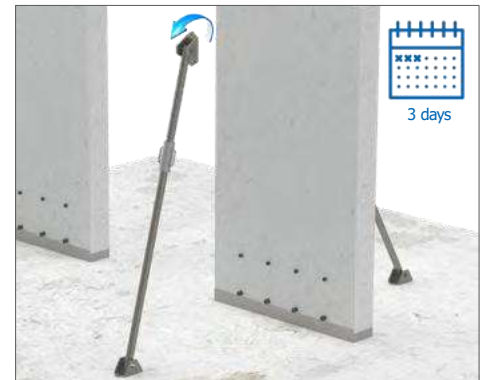
- 4** Transport element to its final position over the dowel bars, straighten and brace.



- 5** Inject non-shrink grout. Seal the sleeve with plugs when grout overflows.



- 6** Bracing can be removed after drying time.



For more detailed installation instructions and design instructions, please check www.dextragroup.com

Traceability

All Grouotec sleeves are marked with a code that includes the batch number, allowing Dextra to retrieve, among other data, the following information:

- Material certificate
- QC inspection report
- Product test report
- Mould number



CAD & BIM



Grouotec sleeve design files are available at www.dextragroup.com to download in the following formats:

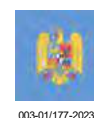
- AutoCAD
- Revit
- Tekla Structures
- ALLPLAN

For other formats, please consult us at cadbim@dextragroup.com

Quality Assurance



Approvals & Certifications



Sustainability



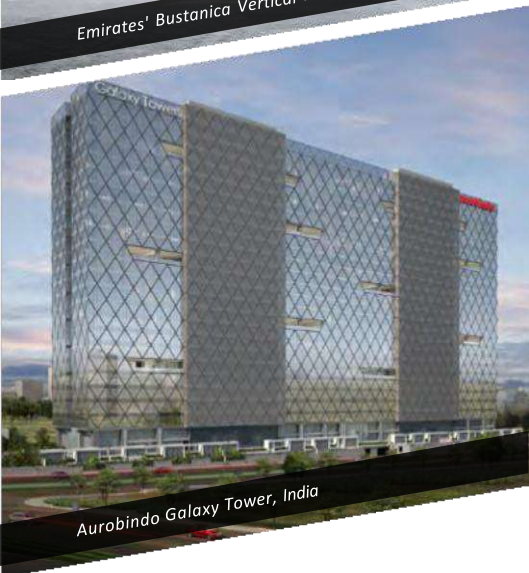
TH020964



Battersea Power Station Development Phase III, UK



Emirates' Bustanica Vertical Farm, UAE



Aurobindo Galaxy Tower, India



Commercial presence
in more than
55 countries



Dextra

**HEADQUARTERS
THAILAND**

Dextra Holding Services Co., Ltd.
Dextra Manufacturing Co., Ltd.
Tel: (66) 2119 4400, (66) 2021 3800

CHINA

Dextra Building Products (Guangdong) Co.,Ltd.
Tel: (86) 20 2261 9901

HONG KONG

Dextra Pacific Ltd. & Dextra China Ltd.
Dextra Pacific Plumbing Ltd.
Tel: (852) 2820 5201

EUROPE

Dextra Europe SARL
Tel: (33) 1 45 53 70 82

MIDDLE EAST

Dextra Middle East FZE
Tel: (971) 4886 5620

INDIA

Dextra India Pvt.,Ltd.
Tel: (91) 22 2839 2694

NORTH AMERICA

Dextra America Inc.
Tel: (1) 626 254 3407

LATIN AMERICA

Dextra Latam
Tel: (507) 6454 8100

Threadlink Pty Ltd Australia
U2/42-44 Birnie Ave Lidcombe
NSW,2141, Australia
Tel: +61 2 9622 1645