

HEADED BARS

Beat Reinforcement Congestion with Headed Bars



Dextra Headed Bar solution available at
THREADLINK

For more information, visit
www.threadlink.com.au

Product features

Headed Bars are mechanical anchorages where an anchor plate is fixed at the end of a threaded rebar. Headed Bars act as a substitute for development length and hook bars.

Design benefits

- Reduced rebar congestion and steel/concrete ratio.
- Improved structure and greater buildability.
- Suitable with sequence of concrete pours.
- Suitable for seismic design.
- Compatible with bended bars to suit certain shapes.
- Come in two sizes to fit ACI / Eurocode requirements.

Construction site benefits

- Fast to install: reduced labor and crane time.
- Head can be screwed/unscrewed to adjust if needed.
- Improved concrete compaction and surface quality (reduction of honeycombing).

Fabricators benefits

Headed Bars are compatible with all Dextra threaded systems. On Bartec, Fortec, Rolltec, the anchor plate is fixed on an A-type threaded rebar. For Griptec, the anchors fit onto a male sleeve.

- No extra equipment is required.
- Same productivity as a regular A-thread (Bartec/Fortec/Rolltec) or male sleeve swaging (Griptec).
- For all bar sizes from Ø 10 to 50mm (ASTM #3 to #18).
- Globally certified solution.

Globally certified solution

Country & Organization	Griptec		Bartec		Fortec		Rolltec	
	Small	Large	Small	Large	Small	Large	Small	Large
France (AFCAB)	12-40	12-40			12-40	12-40		
Poland (ITB)					12-40			
Romania (Procema)			12-40	12-40	12-40	12-40		
Russia (MTC)			12-40	12-40				
UK (CARES)	16-40	12-40*						
USA (IAPMO)			#4-#11				#4-#11	
Europe (CE)				16-40		16-40		16-40

*For 40mm, only bolted headed bar is certified.

Thread systems



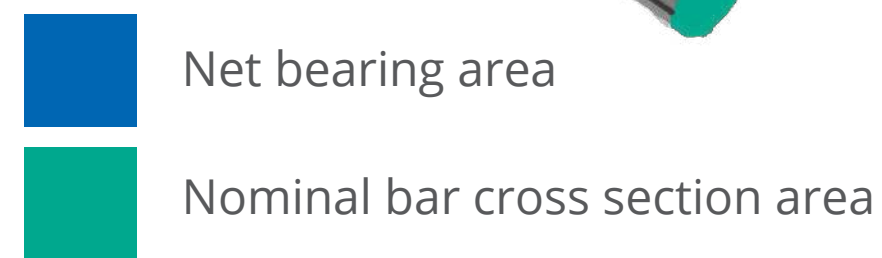
Sizes

- ACI = Deep embedment = Small (Surface ratio > 4A)
- Eurocodes = Shallow embedment = Large (Surface ratio > 9A)



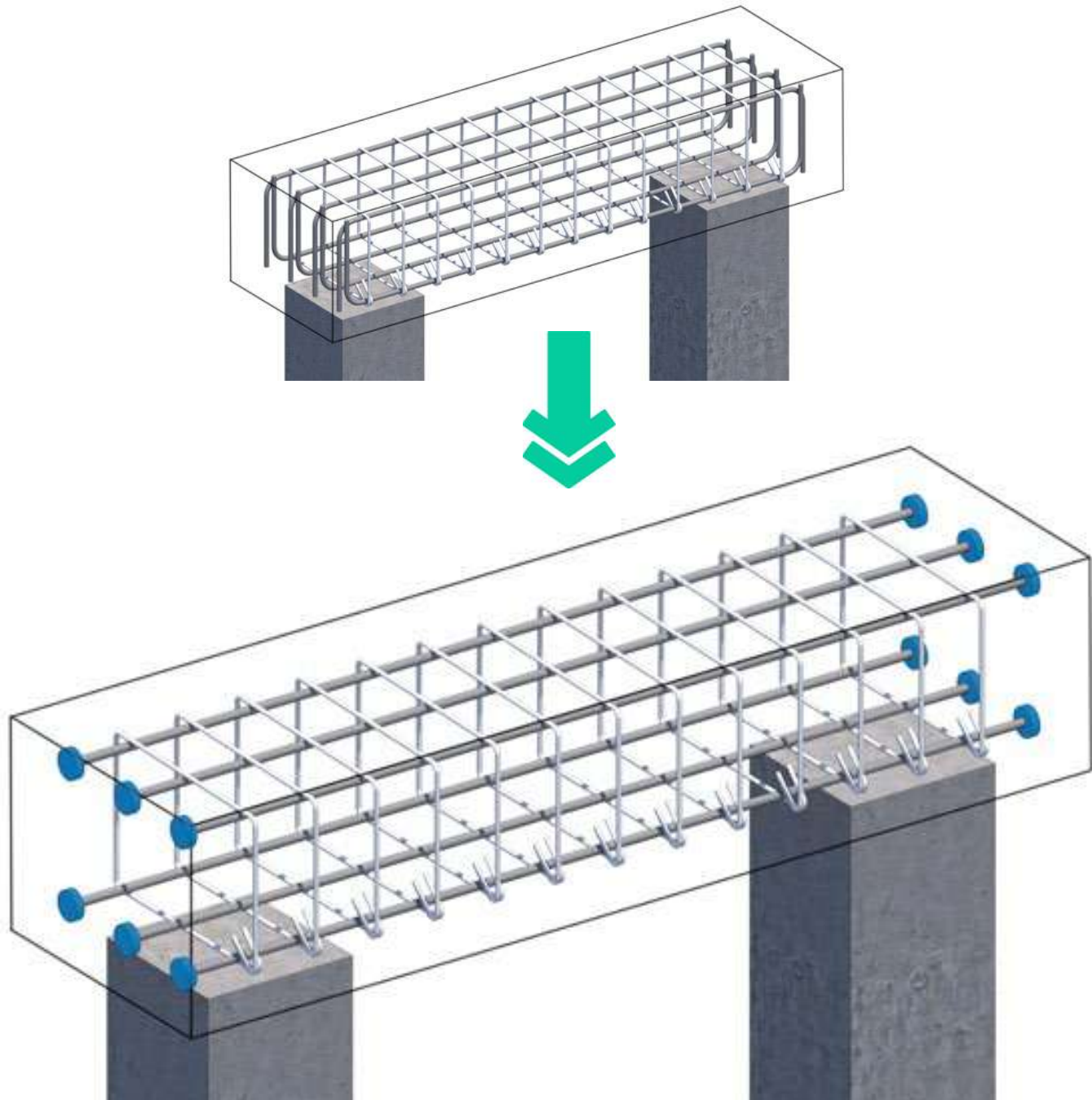
Compatible with all Dextra threaded systems worldwide.
For Headed Bar systems without threads, please consult us.

Surface ratio =

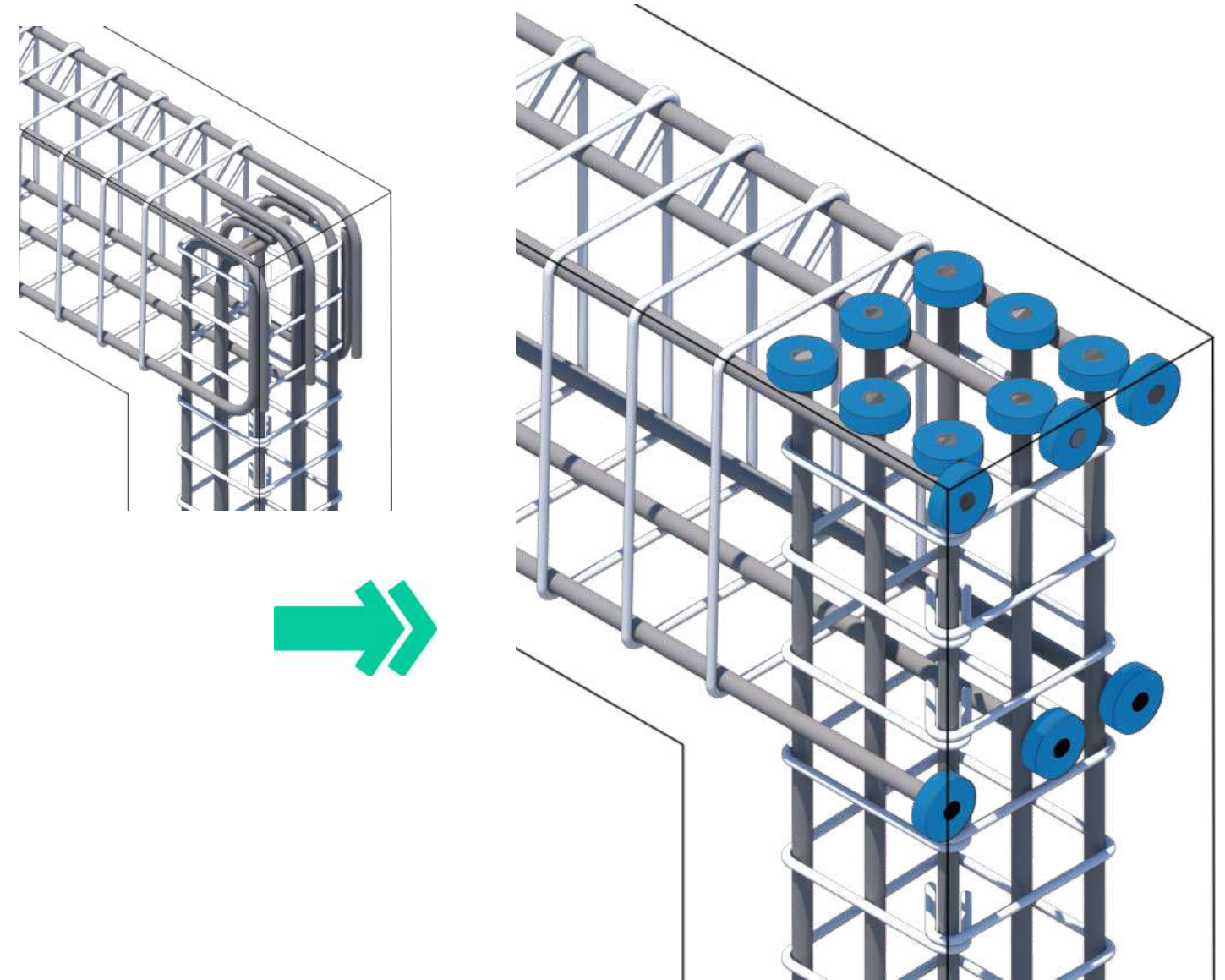


Applications

Beam ends & cantilever elements

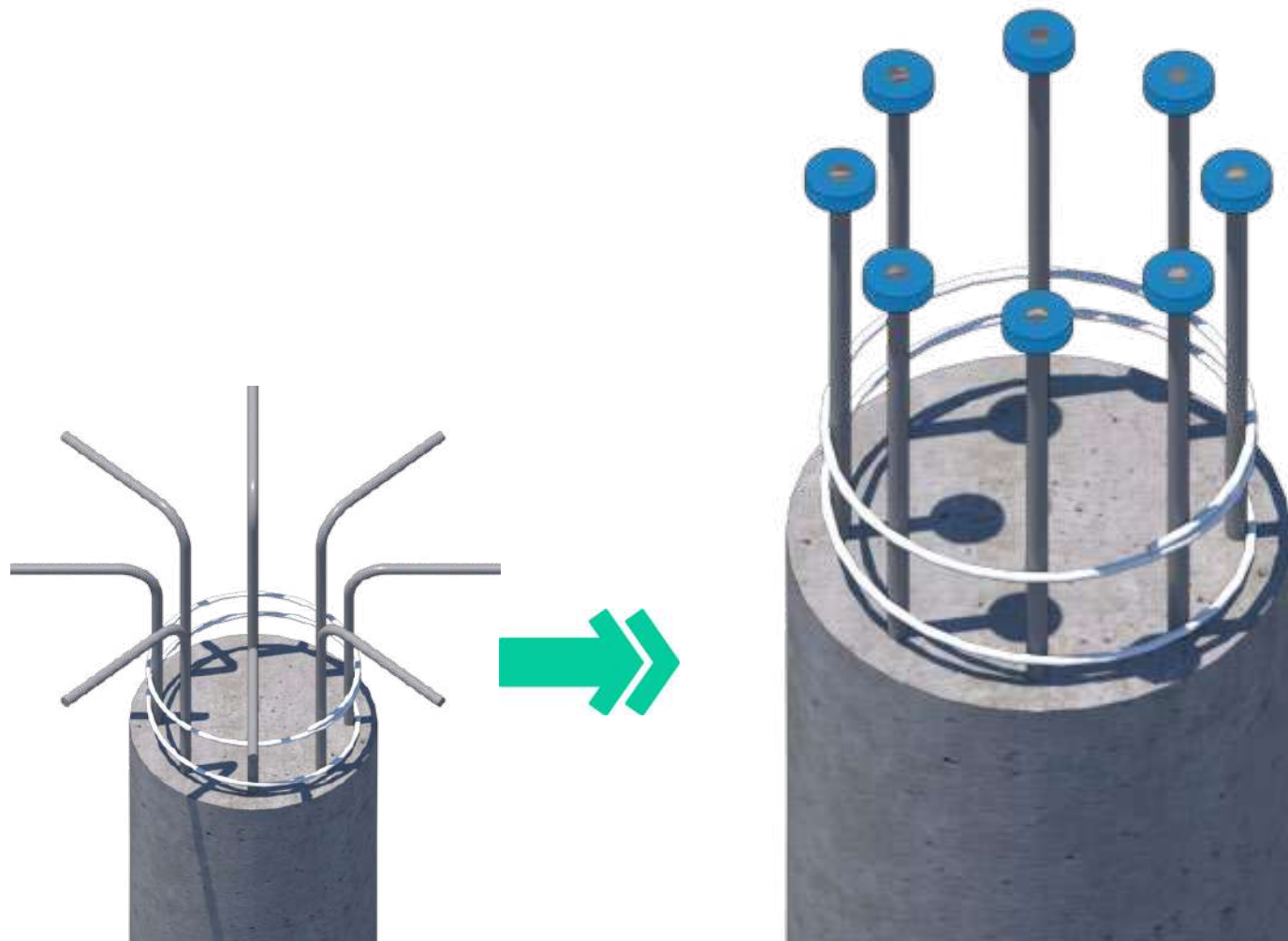


Corners

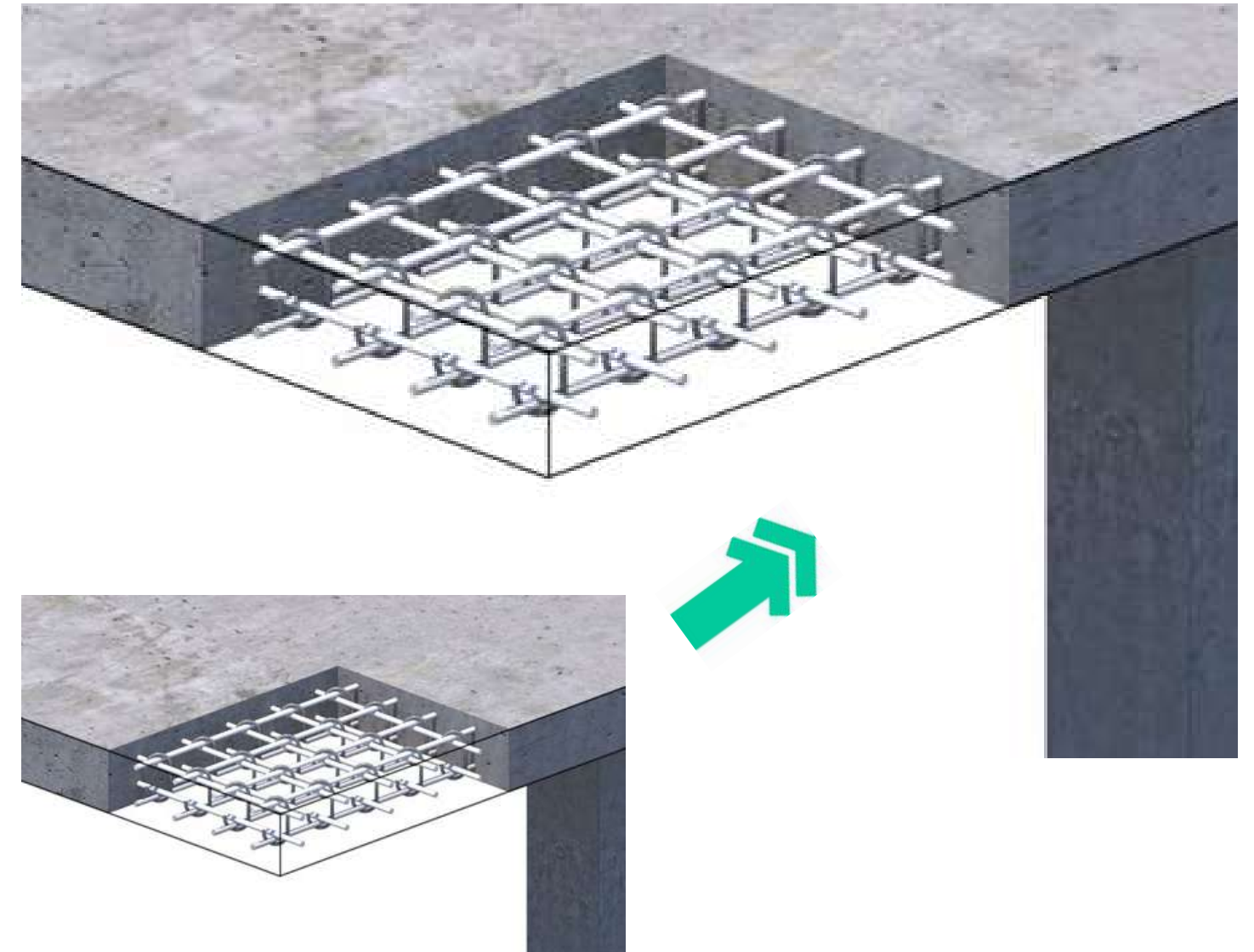


Applications

Alternative to 90° hooks:
Pile caps, column tops

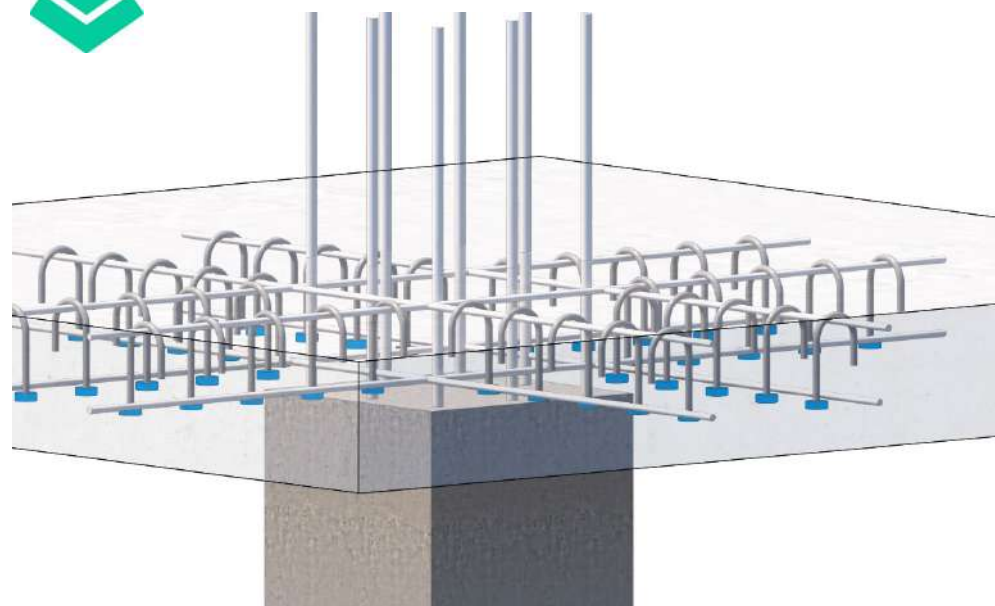
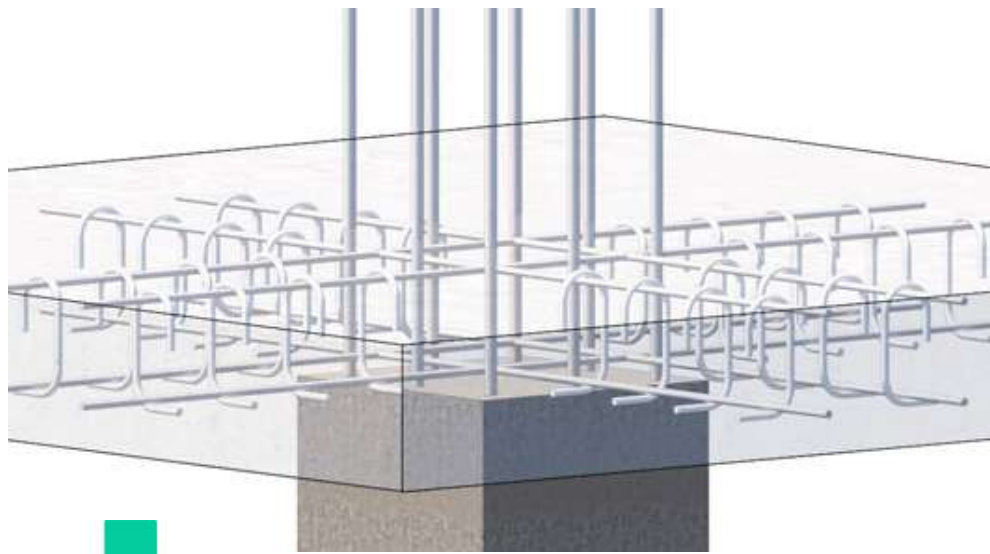


Alternative to 180° hooks:
Slabs and wall shear links

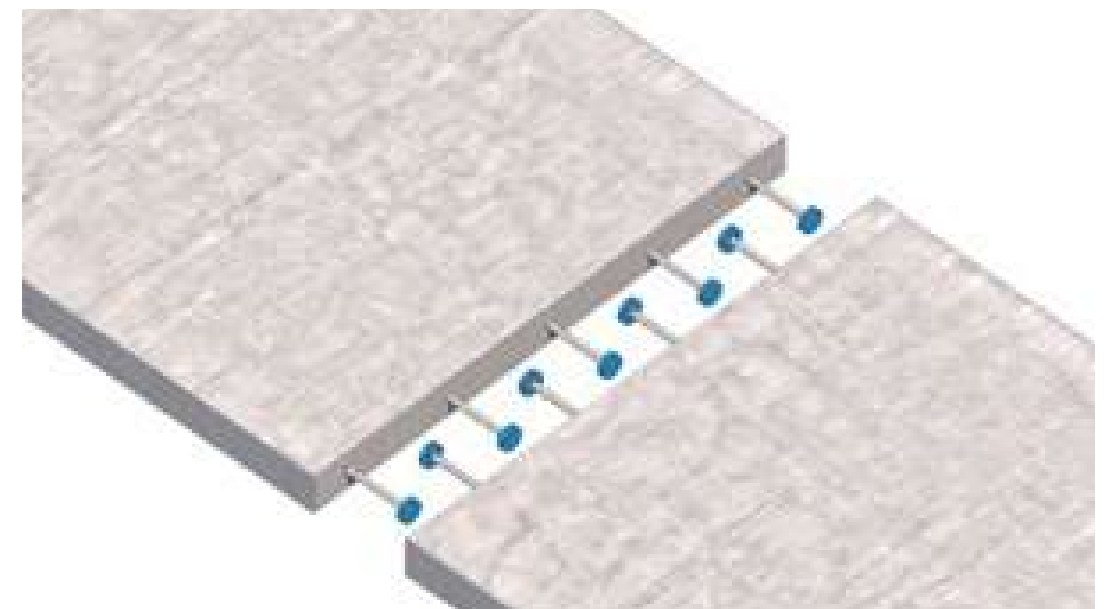
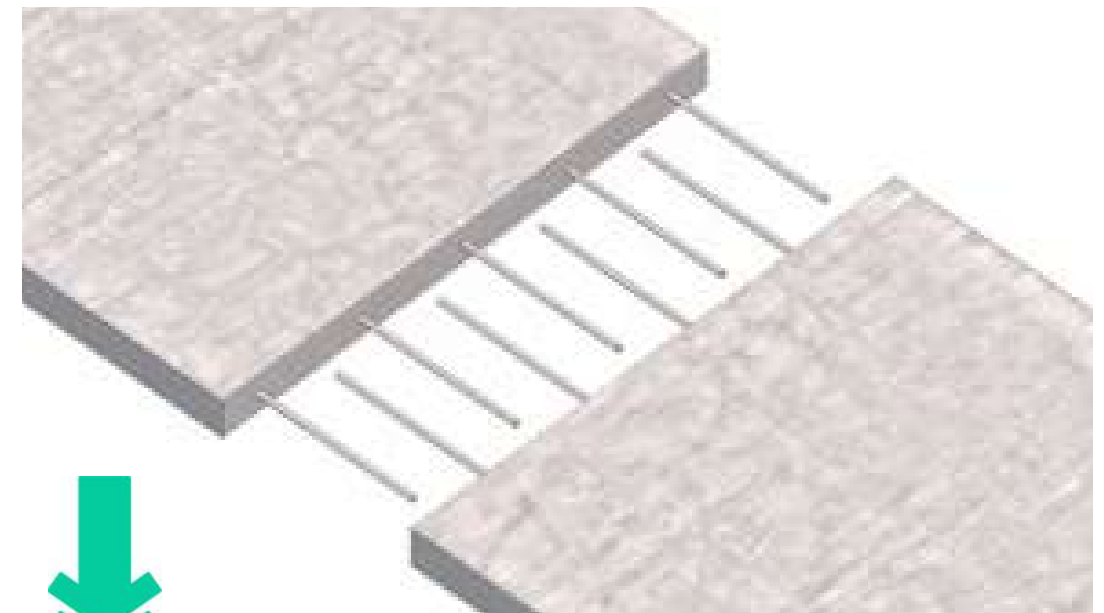


Applications

Punching shear applications



Substitutes long development length





Project References



Resources



Brochure



Calculation tools



Certification



Webpage



AutoCAD tools



Revit tools



Tekla tools



Allplan tools

Compatible with



GRIPTEC



BARTEC II FORTEC



ROITEC

Connect with us



www.dextragroup.com





Commercial presence in more than **55 countries**

Dextra



HEADQUARTERS THAILAND
 Dextra Holding Services Co., Ltd.
 Dextra Manufacturing Co., Ltd.
 Tel: (66) 2119 4400, (66) 2021 3800
 E-mail: thailand@dextragroup.com



CHINA
 Dextra Building Products (Guangdong) Co., Ltd.
 Tel: (86) 20 2261 9901
 E-mail: china@dextragroup.com



HONG KONG
 Dextra Pacific Ltd. & Dextra China Ltd.
 Dextra Pacific Plumbing Ltd.
 Tel: (852) 2820 5201
 E-mail: dplbuilding@dextragroup.com



EUROPE
 Dextra Europe SARL.
 Tel: (33) 1 45 53 70 82
 E-mail: europe@dextragroup.com



MIDDLE EAST
 Dextra Middle-East FZE
 Tel: (971) 4886 5620
 E-mail: middleeast@dextragroup.com



INDIA
 Dextra India Pvt. Ltd.
 Tel: (91) 22 4503 5611
 E-mail: india@dextragroup.com



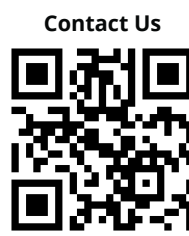
NORTH AMERICA
 Dextra America Inc.
 Tel: (1) 909 966 4843
 E-mail: america@dextragroup.com



LATIN AMERICA
 Dextra Latam
 Tel: (507) 6454 8100
 E-mail: latam@dextragroup.com



AUSTRALIA
 Threadlink Pty Ltd
 U2/42-44 Birnie Ave, Lidcombe, NSW, 2141
 Tel: (61) 2 9622 1645
 E-mail: info@threadlink.com.au



reliable
connections

